



# UNIVERSITY OF ORADEA

## INTERNATIONAL STUDENTS GUIDE



# TABLE OF CONTENTS

|     |   |
|-----|---|
| 4.  | FACTS AND FIGURES                               |
| 4.  | CYCLES OF STUDIES                               |
| 5.  | STRUCTURE                                       |
| 6.  | STUDY PROGRAMMES IN ENGLISH                     |
| 7.  | ECTS AND GRADING SYSTEM AT UNIVERSITY OF ORADEA |
| 9.  | ACADEMIC CALENDAR                               |
| 10. | INTERNATIONAL STUDENTS                          |
| 11. | APPLYING AT THE UNIVERSITY OF ORADEA            |
| 15. | PURSUIING STUDIES                               |
| 20. | UO SERVICES                                     |
| 21. | ROMANIA AND ORADEA CITY                         |
| 22. | HOW TO GET TO ORADEA                            |
| 23. | ORADEA PUBLIC TRANSPORTATION                    |
| 24. | PLACES IN ORADEA                                |
| 26. | THINGS TO SEE IN BIHOR COUNTY                   |

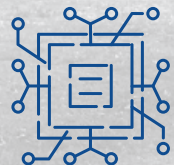




## WELCOME TO THE UNIVERSITY OF ORADEA

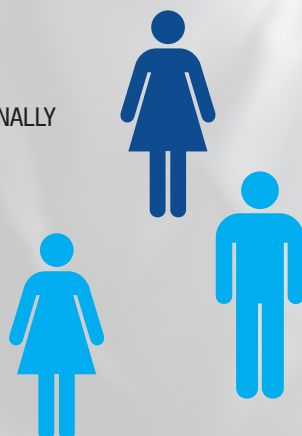
Congratulations on choosing the University of Oradea for your studies abroad. The University of Oradea is a higher education institution that guarantees the right to study without constraints. Creativity and free thinking are the grounds on which we build our reputation. The main objective of the University of Oradea is to offer study programmes with high quality and research based education in a good and stimulating learning environment for our students.

Our university offers a full programme of studies. Regardless of the study programme of your choice, we hope your studies will prove to be both interesting and challenging, and that you will enjoy your stay in Oradea. We strongly believe that the time spent at the University of Oradea will be important for you as part of your academic and personal development.



## FACTS AND FIGURES

|                 |   |
|-----------------|---|
| <b>15</b>       | FACULTIES                                   |
| <b>49</b>       | DEPARTMENTS                                 |
| <b>27</b>       | RESEARCH CENTERS CERTIFIED INSTITUTIONALLY  |
| <b>20514</b>    | STUDENTS                                    |
| <b>869</b>      | TEACHING STAFF                              |
| <b>106</b>      | BACHELOR DEGREE PROGRAMMES                  |
| <b>66</b>       | MASTER DEGREE PROGRAMMES                    |
| <b>7</b>        | DOCTORAL SCHOOLS                            |
| <b>18</b>       | FIELDS OF DOCTORAL STUDIES                  |
| <b>529</b>      | PARTNER UNIVERSITIES WORLDWIDE              |
| <b>1262</b>     | AGREEMENTS WITH EUROPEAN UNIVERSITIES       |
| OVER <b>253</b> | AGREEMENTS WITH Non-EU PARTNER UNIVERSITIES |



## CYCLES OF STUDIES

|                       |  |
|-----------------------|--|
| 1 <sup>st</sup> cycle | BA (BACHELOR DEGREE)<br>(3 - 4 years)<br>(5 - 6 years for certain programmes such as:<br>Pharmaceutical, Medical, Dental or Architectural studies) |
| 2 <sup>nd</sup> cycle | MA (MASTER DEGREE)<br>(2 years)  |
| 3 <sup>rd</sup> cycle | PhD STUDIES<br>(3 years)   |





## STRUCTURE

### FACULTIES

Faculty of Arts

Faculty of Construction, Cadastre and Architecture

Faculty of Law

Faculty of Geography, Tourism and Sports

Faculty of Electrical Engineering and Information Technology

Faculty of Energy Engineering and Industrial Management

Faculty of Management and Technological Engineering

Faculty of History, International Relations, Political Sciences and Communication Sciences

Faculty of Letters

Faculty of Medicine and Pharmacy

Faculty of Environmental Protection

Faculty of Informatics and Sciences

Faculty of Economics

Faculty of Social Sciences and Humanities

Faculty of Orthodox Theology "Episcop Dr. Vasile Coman"



## STUDY PROGRAMMES IN ENGLISH

### BACHELOR'S DEGREE:

Faculty of Management and Technological Engineering  
**Robotics (4 years)**

Faculty of Informatics and Sciences  
**Medical Physics (3 years)**

Faculty of Economics  
**International Business (3 years)**  
**Business Administration (3 years)**

Faculty of History, International Relations, Political Sciences and Communication Sciences  
**International Relations and European Studies (3 years)**

Faculty of Geography, Tourism and Sport  
**Geography of Tourism (3 years)**  
**Physical Therapy and Special Motricity (3 years)**

Faculty of Medicine and Pharmacy  
**Medicine (6 years)**

### MASTER'S DEGREE:

Faculty of History, International Relations, Political Sciences and Communication Sciences  
**European Studies (2 years)**

Faculty of Management and Technological Engineering  
**Advanced Mechatronics Systems (2 years)**

Faculty of Geography, Tourism and Sport  
**Tourism, Management and Planning (2 years)**

Faculty of Economics  
**Advanced Management (2 years)**  
**Business Administration (2 years)**  
**International Business Administration (2 years)**

Faculty of Letters  
**Types of modernity in the Anglophone and Francophone spaces (2 years)**



## ECTS AND GRADING SYSTEM AT UNIVERSITY OF ORADEA

University of Oradea curricula are adapted to the European Higher Education Area (EHEA) and use European Credits Transfer System (ECTS).

### ECTS What is it?

The ECTS represents the workload and defined learning outcomes (“what the individual knows understands and is able to do”) of a given course or programme.

The workload is an estimation of the time the individual typically needs to complete all learning activities. Such as lectures, seminars, projects, practical work, and individual study required to achieve the defined learning outcomes in formal learning environments. One credit usually corresponds to 25 to 30 hours of work.

60 credits are the equivalent of a full year of study. 30 credits are the equivalent of a semester of study. In a standard academic year, 60 credits are divided into several smaller components (subjects).

Each subject corresponds to a specified number of credits. Credits are awarded when the student fulfils all the requirements to pass a particular subject, which means a passing grade at the partial and/or final exams for the course, and a passing grade at the seminar/ laboratory/ project/ internship work.

The list of credits obtained by the student is reported in the Transcript of Records issued by UO.





The grades are integer values from 1 to 10, with the maximal value of 10 (the highest level of knowledge and skills) and the minimal level of 5 (a basic level of knowledge is required, covering the main topics taught) for passing the subject.

The Romanian Ministry of Education and Research recommends the following interpretation of each grade:

| ECTS Grade | Romanian Grade | Definition of Scale Interval |
|------------|----------------|------------------------------|
| A          | 10             | Excellent                    |
| B          | 9              | Very good                    |
| C          | 7-8            | Good                         |
| D          | 6              | Satisfactory                 |
| E          | 5              | Sufficient                   |
| FX, F      | 1-4            | Failed                       |



## ACADEMIC CALENDAR

### First semester:

- The first semester begins on the 1st of October and consists of 14 effective weeks of academic activities.
- The study period is interrupted by 2 weeks of holidays on Christmas.
- The winter exams begin at the end of January and last for 4 weeks.

### Second semester:

- The second semester begins after one week of holiday, at the end of February, and lasts for 14 weeks as well.
- The second semester is interrupted by a one-week Easter holiday.
- The summer exams begin in June and last for 4 weeks.
- The autumn session takes place in September.

Please visit our website for an updated version of the academic calendar:  
<https://www.uoradea.ro/Structura%20anului%20universitar>





## **The International Relations Department**

The objective of this office is to encourage UO students to participate in mobility programmes and to help incoming exchange students with their integration.

### **Contact details:**

International Relations Department

<https://www.uoradea.ro/About+Us>

Str. Universităţii nr. 1, 410087 – Oradea

Tel: +40 259-408183

Fax: +40 259-467642

E-mail: [dri@uoradea.ro](mailto:dri@uoradea.ro)



## A. Eligible candidates

- EU, EEA and Swiss Confederation citizens;
- EU third countries citizens;
- High-school or university graduates from institutions acknowledged in the countries of origin and whose diplomas are recognized by the Romanian Ministry of Education and Research.

## B. Language of study

Requirements for EU, EEA and Swiss Confederation or third countries to do their studies either in Romanian or in English:

a. Foreign citizens who do not speak Romanian can apply for studies at any specialisation taught in Romanian provided they attend a preparatory year to study Romanian at an authorized institution. At the end of the preparatory year, the candidate has to acquire a language certificate.

Provided that the students are able to prove a good command of the language, they will take a test at the Faculty of Letters for certifying their level of the Romanian language acquired.

b. Foreign citizens choosing to study in English will provide one of the following documents: an acknowledged English language certificate, a proof attesting that they have studied in English, or a language certificate issued by the University of Oradea.

## C. Number of students per study programme

Each year, the Senate of the University of Oradea decides with the approval of the Ministry of Education and Research upon the number of available places. The available places are posted on the university website after the adoption of the Senate Decision.

## CANDIDATES FROM THE EU MEMBER STATES, THE EEA AND THE SWISS CONFEDERATION

According to Law 316/2006, “the EU, the EEA and the Swiss Confederation citizens have access to all forms of education under the same conditions as stipulated for the Romanian citizens including tuition fees”.

As of 15 June 2009, according to the Ministry of Education memo registered under 39460/21.06.2009, the National Centre for Acknowledgement and Validation of Diplomas (CNRED) at the Romanian Ministry of Education and Research must certify diplomas issued by the EU, the EEA and the Swiss Confederation. CNRED issues certificates allowing the candidates to apply at public universities. The Letter of Acceptance issued by the General Directorate for International Relations (former European Affairs and the Bologna Secretariat) is no longer needed.

The documents needed for the issuance of the Certificate by the CNRED will be submitted by the International Relations Department at the University of Oradea.

**Very important!!!** The students can be enrolled at the University of Oradea on the condition that they obtain the approval to study in Romania and have passed the admission criteria as set out by the faculty and specialization they opted for.

According to Law 316/2006, “the EU, the EEA and the Swiss Confederation citizens have access to all forms of education under the same conditions as stipulated for the Romanian citizens including tuition fees”. Thus, tuition fees will be the same as those settled by the Senate of the University of Oradea for the upcoming academic year for

the Romanian citizens.

European Union citizens do not need study visa in Romania. Nevertheless, they have to inform the Romanian Immigration Office/ Bihor Immigration Office on their stay, in order to be issued a Registration Certificate. In the case of the **CITIZENS COMING FROM COUNTRIES OTHER THAN THE EU, THE EEA AND THE SWISS CONFEDERATION**, the studies are validated by the Romanian Ministry of Education and Research. The enrolment file comprises all the documents needed for validation of high-school education.

If a candidate is eligible and the documentation is complete, the International Relations Department at the University of Oradea will forward the file to the admission committee of the University for validation and after the selection to the General Directorate of International and European relations.

After the validation of previous studies, the Directorate issues a Letter of Acceptance that the student needs in order to be enrolled and to get the study visa.

Failure to obtain the Letter of Acceptance from the General Directorate of International and European relations prevents the candidate from enrolling at the University of Oradea.

NO original documents are needed, only legalised photocopies.

NO correspondence shall be e-mailed.

A document describing the grading system in the institutions where the candidate has previously studied shall be attached (the mark equivalent for the grades from fail to excellent).

The university has NO responsibility regarding the actions of potential agents involved in your application process.









## GETTING THE VISA

The EU, the EEA and the Swiss Confederation third countries citizens need a study visa issued by the Romanian embassy in their country of origin. The visa is issued based on the Letter of Acceptance issued by the Ministry of Education and Research. If there is no Romanian diplomatic mission in the country of origin, the candidates will contact diplomatic missions in the neighbouring countries. Upon arrival and submitting of the enrolment documents at the faculty, foreign citizens have the obligation to obtain the permit of residence based on the study visa.

## TUITION FEES

The tuition fees for the EU, the EEA and the Swiss Confederation third countries citizens

have been settled according to the Senate Decision.

### Fulltime undergraduate and postgraduate studies for NON EU candidates

The tuition fees will be paid all through the academic year including training periods as stipulated in the curricula. The tuition fees will be paid in advance for a period of 9 months.

The tuition fees for part-time studies and other forms of education organised according to law, the fees equivalent to three months will be paid for each academic year to the amount corresponding to the fulltime education fields of study. The full amount shall be paid before the first exam session.

| Field of study   | Undergraduate, postgraduate and residency education (euro/year) | Post-university, doctoral studies (euro/year) |
|--|---|---|
| Technical, Agronomic, Sciences, Mathematics and Applied Mathematics, Sport | 2673  | 3190  |
| Architecture   | 3465  | 4070  |
| Humanities, Psychology, International relations                            | 2700  | 2640  |
| Economics-Romanian language  | 2250  | 2640  |
| Economics-English language   | 3150  | 2640  |
| Medicine   | Year I-4950   |   |
| Year II-VI- 4500   | Year I-4250   |   |
| Year II-VI- 3740   |   |   |
| Music and Arts   | 4158  | 4840  |
| Music Performance, Theatre   | 7425  | 8470  |
| Preparatory language year  | 2250  |   |



## PURSUING STUDIES

### THE EU, THE EEA AND THE SWISS CONFEDERATION CITIZENS

Each foreign student needs the assent of the Ministry of Education and Research. In order to do that, the student will submit the following documents for the issuance of the Letter of Acceptance/Acknowledgement Certificate:

1. Application form for the University of Oradea (2 copies);
2. Application form for recognition of studies (2 copies);
3. High-school Diploma (original language) – (2 copies) – simple copy, if the diploma is issued in English/ French/ Spanish/ Italian and the legalized copy of the translation of this Diploma, into Romanian (if it was issued in other language, than those mentioned above);
4. Transcript of Records from High School (for

all the study years)–(2 copies) – simple copy, if the document is issued in Romanian/ English/ French/ Spanish/ Italian and, the legalized copy of the translation of this document, into Romanian (if it was issued in other language, than those mentioned above);

5. Extra documents:

- For diplomas from UK we require full A Level diploma with subjects in Sciences, Biology, Chemistry, and Physics;
- For Baccalaureate Diploma obtained in Spain - “Pruebas de Aptitud para el Acceso a la Universidad, calificación Apto;
- For diplomas obtained in Sweden please attach Conditional Statement of Eligibility issued by the National Admissions

Office to Higher Education (VHS - Verket for Hogskoleservice) - regarding the access to higher education;

- For diplomas from Greece - Panellinies Exetaseis (The paper from the national exams for the general high school). The translations which are made in Greece, will be legalized/notarized by the Ministry of Foreign Affairs in Greece;

- For diplomas from Portugal - Exames Nacionais do Ensino Secundario;

- For diplomas from USA – Scholastic Aptitude Test (SAT) or ACT.

Each document written above, must be translated into Romanian language and legalized by a public notary, if it is not issued in: English/French/Spanish/Italian.

6. Identification document (photocopy): Passport pages 1,2,3,4 or national ID (2 copies);

7. Confirmation of payment for non-refundable processing file fee of 150 euro.

- For countries like Greece, Spain, Italy, Portugal and Cyprus the copy of the school diploma must be attested with the Apostille of Hague Convention!

- For the other countries which are not from EU, legalized copies of the translation into Romanian are compulsory! Simple copies of the diplomas will not be accepted!

- Diplomas obtained in countries that are not part of Hague Convention must be legalized by the Ministry of Education and Research, Ministry of Foreign Affairs of the issuance country of the diploma and the Romanian Embassy/Consulate of the issuance country of the diploma;

Or

- by the Ministry of Education and Research of the issuance country of the diploma, Embassy/Consulate of the issuance country of the diploma in Romania and The Ministry of Foreign Affairs in Romania.

- For the countries where there is

no Romanian Embassy/Consulate or those countries, which have no Embassy/Consulate in Romania, the study documents will be stamped by the Ministry of Education and Research and the Ministry of Foreign Affairs of the issuance country of the documents.

### **Enrolment for the EU, the EEA and the Swiss confederation candidates**

Candidates passing the admissions will be enrolled according to the Admissions Methodology elaborated by faculties based on the University Methodology. They will confirm their enrolment and pay the enrolment fee within the terms and deadlines settled by the faculty under the same conditions as the Romanian students.

Successful candidates failing to confirm their enrolment before the deadline will no longer be considered.

Candidates failing to submit the Certificate issued by the CNRED before the 1st of October will not be enrolled.

1. High school diploma or equivalent to the ORIGINAL and certified translation into Romanian;

2. The original of the Transcript of Records and the certified translation into Romanian;

3. Statement issued by the Ministry of education and Research, which proves that the student has the right to study in Romania (this certificate is issued by the Ministry of Education and Research, based on the file submitted for review); ATESTAT

4. Copy of birth certificate and certified translation into Romanian;

5. Copy of passport or identity card;

6. Registration fee paid at the Faculty of Medicine and Pharmacy;

7. Marriage certificate (if the student's name changed after marriage);

8. Medical certificate;

9. 4 passport photos;

10. A paper folder.



## THE THIRD COUNTRIES CITIZENS

Each foreign student needs the assent of the Ministry of Education and Research. In order to do that, the student will submit the following documents for the issuance of the Letter of Acceptance/Acknowledgement Certificate:

1. Application form for the issuance of the acceptance letter for studies (2 copies);
2. Application form for the university (2 copies);
3. High School Diploma which allows the access of the candidate to the respective education program copy and legalised translation (English or Romanian) (2 copies);
4. Transcript of records from High School- copy and legalised translation (English or Romanian) (2 copies);
5. Birth certificate: copy and legalized translation (English or Romanian) (2 copies);
6. Passport Copy – valid at least 6 months after the date when the letter of acceptance to studies is issued; (2 copies);
7. Identity card (proof of permanent address) translated copy-(2 copies);
8. Medical certificate in English to prove that the applicant does not suffer from contagious diseases( HIV, TBC, Hepatitis C) or other illnesses incompatible with the future profession)–(2 copies);
9. 2 passport photos (3/4 cm);
10. Confirmation of payment of the non-refundable processing fee of 150 euro into the Bank account of the University;
11. English/Romanian language certificate B2 level (2 copies);
12. Other bachelor diploma from the medical field;
13. If the submission of the file will be made by another person, the authorized person must submit to the Foreign Students

Office a notarized power of attorney and passport copy.

### **Enrolment for the third countries candidates**

Upon arrival, the candidates have to submit the required documents at the faculty of their choice.

According to the Letter of Acceptance, the file will contain the following documents:

1. Letter of Acceptance issued by the Romanian Ministry of Education and Research;
2. The latest original diploma. Candidates for doctoral studies or choosing to have their partial studies validated have to enclose legalized copies of transcripts of records and the corresponding syllabus;
3. Translation of the latest diploma legalized by a Romanian diplomatic mission;
4. Legalized translation of the birth certificate;
5. Medical certificate;
6. Passport copy with the study visa for Romania.

These are compulsory documents to be submitted by the candidates. Besides, each faculty has the autonomy to request further documents.

The complete file of the candidate will be submitted within the terms and deadlines settled in the Letter of Acceptance by the Romanian Ministry of Education and Research. The faculty will not accept documents submitted after the deadline stipulated by the Ministry of Education and Research.

Within two weeks after the deadline to submit the file, the candidates will take the Romanian language test (for studies in Romanian) or English (for studies in English) in order to acquire the Language Certificate. Candidates failing to take or pass the language test will not be enrolled.

Candidates acquiring the Language Certificate will fill in an enrolment form.



## PROCESSING FILE FEE

The processing file fee will be paid in the University's bank account number before the application is submitted and in case of a negative answer, the fee is not refundable. The processing file fee is requested by the University of Oradea and it covers the expenses for the process of the issuance of the acceptance letter.

All these documents will be sent together in a file to the University of Oradea.

## REGISTRATION AT THE IMMIGRATION OFFICE

Upon arrival in Oradea, the student must contact the Office for Foreign Students and Immigration Office in order to be registered and to get the permit of residence for students. The registration in the immigration office is compulsory for both: EU, EEA, the Swiss citizens and third countries.

### EU, EEA and Swiss Confederation citizens

The EU, EEA and Swiss citizens have to contact the Immigration office within 15 days after the arrival.

Documents needed for the permit of residence:

- Application form;
- Declaration or Statement;
- ID/Passport (original and copy);
- Document that certifies the student is registered in an accredited education institute;
- Proof of financial support;
- Proof of health insurance;
- Plastic folder;
- Fiscal stamp.



## Third Countries citizens

Each student who is accepted for studies in our University must contact a Romanian Embassy or Consulate in order to apply for the student visa. The third countries citizens have to contact the Immigration office within 30 days before the expiring date of the specific visa in the passport. If not, the students will receive a fine.

Documents needed for the permit of residence:

- Application form;
- Document attesting the border crossing;
- Acceptance letter for studies(copy);
- Testimonial from the faculty which attests the payment of the tuition fee and the total period of studies;
- Proof of financial support;
- House contract;
- Health certificate stating that the student is not suffering from any diseases, threatening the public health;
- Social Health insurance at National Insurance Agency (Casa Națională de Asigurări de Sănătate);
- 2 recent photographs;
- Plastic folder;
- Fees.

Further information is available here: <http://igi.mai.gov.ro/en/content/studies>





## ACCOMMODATION

Foreign students who study in Romania can obtain accommodation and food on the campus facilities subject to room availability. Students have to contact the faculty secretariat, in order to get a place in students dormitories.

Students can also find accommodation in hotels, or can rent a flat. For assistance in finding accommodation in private flats, the students can contact directly the local real estate agencies.



# ROMANIA AND ORADEA CITY

Romania is a country located at the crossroads of Central, Eastern, and South-Eastern Europe

## SYMBOLS

Capital – Bucharest

Official language – Romanian

The 12th largest country in Europe  
≈ 20 million inhabitants in Romania  
≈ 200 thousand inhabitants in Oradea

ROMANIAN FLAG



ROMANIAN EMBLEM



ORADEA EMBLEM



**Oradea** is one of the most important economic, social and cultural centres in the western part of Romania. The city is located in the north-west of the country, nestled between hills on the Crişana plain, on the banks of the Crişul Repede River, which divides the city into almost equal halves. Located about 10 km from Borş, one of the most important crossing points on Romania's border with Hungary, Oradea ranks 10th in size among Romanian cities.

The city is remarkable for its particularly rich collection of Art Nouveau architecture. Considered by art history specialists as a true “architectural reservation”, Oradea is host to no less than 77 monument buildings officially listed in the records of the National Commission for Historical Monuments. It is for this reason that the city is part of an international Art Nouveau network, alongside cities such as Brussels, Barcelona or Havana.

To learn more about Oradea and its surrounding region, please access the following links:

<http://romaniatourism.com/oradea.html#>

<http://oradea.travel/en/?p=1722>



# HOW TO GET TO ORADEA



## By plane:

Oradea International Airport (OMR)  
Address: Calea Aradului 80, Oradea  
Telephone: 0259 416 082  
[www.AeroportOradea.ro](http://www.AeroportOradea.ro)

The airport is located 3.1 miles southwest of the city centre. Airlines operating flights to Oradea: Tarom, Blue Air, Ryanair.

Cluj Napoca (CLJ) -- 100 miles east  
[www.AeroportCluj.ro](http://www.AeroportCluj.ro)  
Timisoara (TSR) -- 110 miles south  
[www.AeroTim.ro](http://www.AeroTim.ro)



## By bus:

Oradea Bus Station  
Autogara Oradea  
Address: Str. Războieni 81  
Telephone: 0259 418 998  
[https://www.autogari.ro/oradea/autogara\\_intrans\\_sa/Autogara8784](https://www.autogari.ro/oradea/autogara_intrans_sa/Autogara8784)



## By train

Oradea Train Station (Gara Oradea)  
The train station is located about 1.2 miles from downtown. Tram # 1 and 4 run south from Piata Bucuresti (just outside of the train station) to Piata Unirii, Oradea's main square.  
There are daily trains from/to Budapest (Hungary) (travel time – 4 hours).

Address: Str. Republicii 114, Oradea  
Tel: 0259 414 970  
Web: <https://www.cfrcalatori.ro/en/>



## By car:

The fastest route from Bucharest to Oradea is via A1 / E81 - E68 - E79 / DN76: Bucuresti – Pitesti – Ramnicu Valcea – Sibiu – Alba Iulia – Deva - Beius – Oradea  
Driving route from Budapest (Hungary) to Oradea:  
E60 - E671 / E 69: Budapest – Szolnok – Oradea



# PUBLIC TRANSPORTATION

Oradea Tramway routes map:  
<http://www.otlra.ro/reteatransport/tramvaie/harta>

Map of Oradea Bus routes:  
<http://www.otlra.ro/reteatransport/autobuze/harta>



### FULGER TAXI

0259 922  
0259 944  
0745 620 934  
0722 622 522  
0770 600 174

### GREEN TAXI

0259 950  
0359 800 250  
0731 950 900  
0754 010 250  
0745 254 214

### START TAXI

0259 940  
0359 800 940  
0721 905 905  
0745 999 940  
0788 788 940



## PLACES IN ORADEA

### HYSTORY

Museum of Crisana Region (Muzeul Tarii Crișurilor)

Address:

Str. Armatei Române nr.1/A, cod: 410087, Oradea, jud. Bihor

tel.: 0259/706101 fax: +40259 479918

[www.mtariicrisurilor.ro](http://www.mtariicrisurilor.ro)

Oradea Fortress

Piața Emanuel Gojdu, nr. 39-41, Oradea, Bihor (Cetatea Oradea, Corp A) (Oradea's Fortress, Wing A)

### HERITAGE MONUMENTS

Apollo House

The Adorján Houses

Darvas - La Roche House

Poynar House

Black Eagle Palace

Moskovits Miksa Palace

Rimanóczy Sr. Palace

Sonnenfeld Palace

Stern Palace

The City Hall Palace of Oradea

The Palace of Moskovits Adolf and sons

The Palace of the Greek-Catholic Bishopric

The Bihor Chamber of Commerce and Industry

The Aachvas Rein Synagogue

The Great Orthodox Synagogue of Oradea

The Romanian Orthodox Bishopric

### ECCLESIASTICAL MONUMENTS

The Moon Church

The Church of Saint Ladislaus

The Church of Saint Nicholas



## ENTERTAINMENT

### Cinema Palace Oradea

Str. Nufărului nr. 30

Tel: +40 259 420002

Web: [www.lotusmarket.ro](http://www.lotusmarket.ro)

### Queen Marie Theatre (Teatrul Regina Maria – Oradea)

Address: Piața Ferdinand I nr. 4 - 6

Telephone: +40 259 436.592

[www.TeatrulReginaMaria.ro](http://www.TeatrulReginaMaria.ro)

## SPORT AND LEISURE

Aquapark NYMPHAEA Oradea

Fitness clubs

City bikes

## SHOPPING CENTRES

Lotus Center

Crisul Shopping Center

Oradea Plaza

Era Shopping Park Oradea

## NATURE

Zoo

Dendrological Park from University of Oradea

Bălcescu Park

I.C. Brătianu Park

1st December Park

22nd December Park

Liberty Park



### Republicii street:

It is the centre of pubs, shops and also excellent restaurants located at the length of the street. During the holidays, there are street cafes in front of many restaurants inviting passers-by to rest.



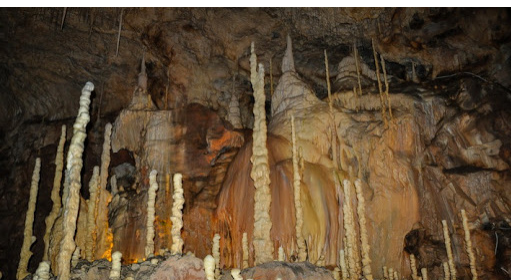
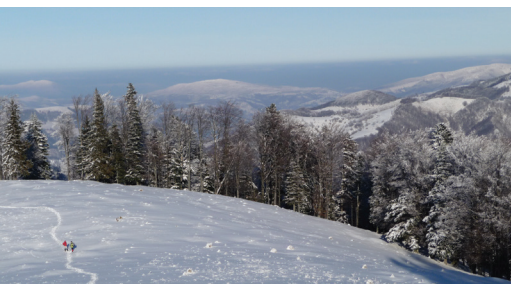
## THINGS TO SEE IN BIHOR COUNTY



Near the city is Băile Felix, a spa resort known for its thermal waters and water lilies. It also has many pools where tourists can enjoy wonderful vacations laying in the sun, swimming, or visiting the water lily natural reservation.







Only an hour's drive from Oradea is the Apuseni Natural Park, one of the most beautiful in country. Hiking, skiing in the winter, bike routes and caves, a tourist can have it all there. And do not forget to taste the local food!

Luckily, four of the major caves in Romania are also located not far from Oradea: Scărișoara Glacier Cave, The Bears' Cave, The Meziad Cave, and Ungurului Cave. The Bears' Cave has impressive amounts of stalagmites and stalactites and it is very often visited by tourists, while the Scărișoara Glacier Cave is known throughout Europe for its 7500 cubic meters of ice. The caves are usually harder to get to and some require certified tour guides. There are actually many more caves, and you can take tours with local guides.

If you want to hike on the narrow paths of the Bihorului Mountains, the best place to start from is the Padiș plateau, whence start the most numerous marked tourist tracks. For further details, access the web

[www.padis.ro](http://www.padis.ro).





## **UNIVERSITY OF ORADEA**

Str. Universității nr. 1, Oradea, 410087, Bihor, România

Phone: +40 259 408 431, +40 259 408 105

Fax: +40 259 432 789

E-mail: [biroucomunicare@uoradea.ro](mailto:biroucomunicare@uoradea.ro)

Web: [www.uoradea.ro](http://www.uoradea.ro)

Media UO - <https://media.uoradea.ro>

Facebook - <https://www.facebook.com/UniversitateaDinOradea>

© University of Oradea 2020